

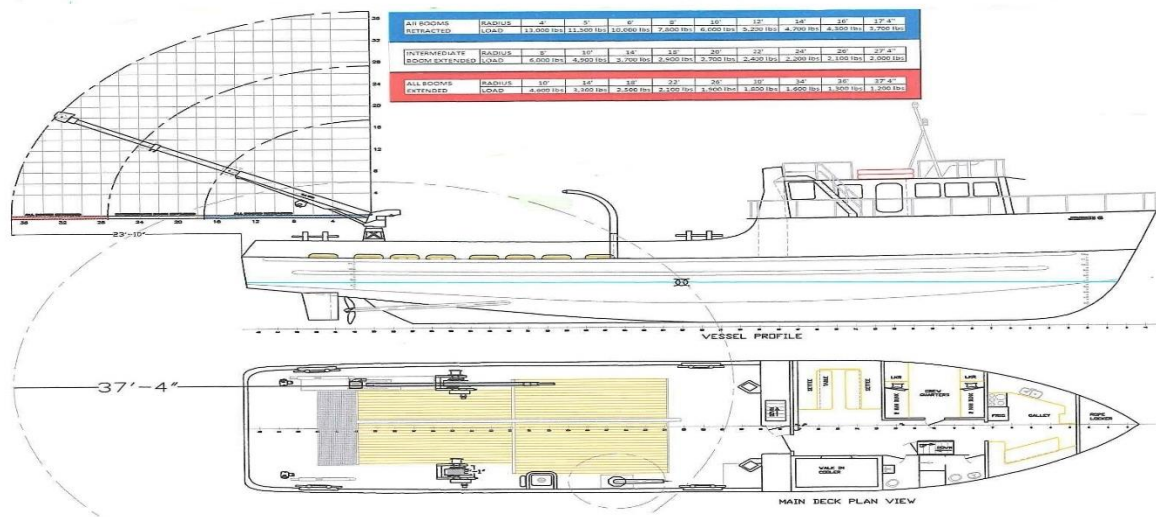
LEVIATHAN I

110' DSV w/3-point mooring system



LEVIATHAN I

110' DSV w/3-point mooring system



Capacities

Fresh Water Capacity	20,000 gallons
Grey Water Capacity	5,600 gallons
Fuel Capacity: Total	10,700 gallons
Transferable	5,950 gallons
Fuel Consumption: Cruising	35 gph
Working	25 gph
Idling	10 gph

Accommodations

Accommodations	18 people
Heads	2 Full
Galley	Full Compliment
Maximum Persons On Board	31

General

Year Constructed	1982
Hull Material	Steel
Gross Registered Tons	89
Draft	7'- 8'3"
Horse Power	725
Speed	8-10 knots

Equipped with deck mounted 8T crane and A-frame as needed